

## PRODUCT LINE

### **What is the Taylor Advantage?**

**"We engineer and build what you need."**

**We build more than just Industrial Generators...**

**We build relationships through**

**FAITH - VISION - WORK**

## **Table of Contents:** **Page:**

---

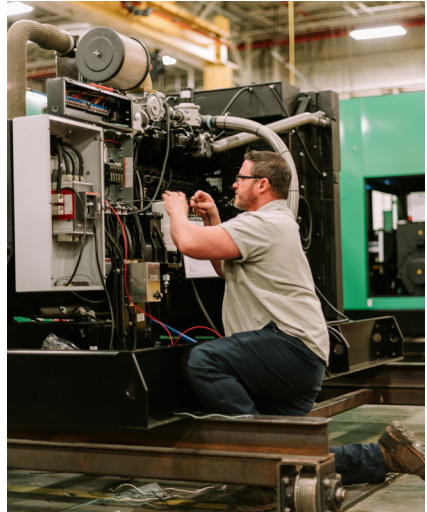
• Introduction	1 - 3
• Stationary Generators	4 - 5
• Diesel	6 - 8
• Natural Gas/Liquid Propane	9
• Oil Field Generators	10 - 11
• Intermodal Generators	12 - 13
• Agricultural Generators	14 - 15
• Features	16 - 17
• Engines	18
• Alternators	19
• Controllers	20 - 21
• Service & Parts	22 - 23
• Metal Fabrication & Paint Facility	24 - 25
• The Taylor Group of Companies	26
• Taylor Machine Works	27
• Sudden Service, Inc.	28

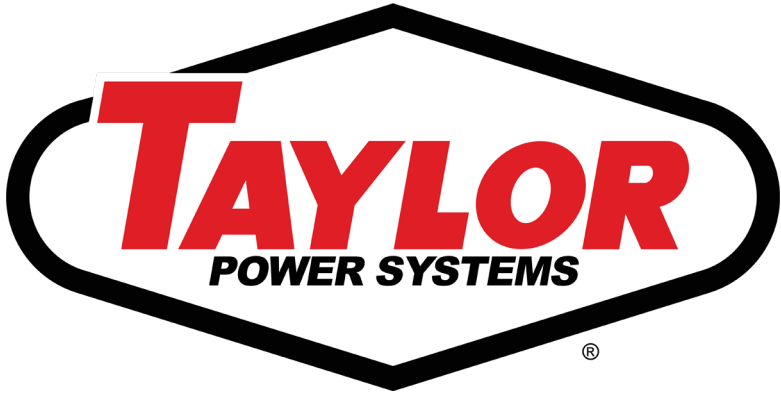


**MADE IN THE USA**



**MISSISSIPPI**





For over 90 years, the Taylor name has been synonymous with manufacturing the highest quality, most dependable industrial products available.

Taylor Power Systems brings generations of unmatched excellence and durability to the power generator industry. With our standard two-year limited warranty, each of our generator sets is factory-built and tested to insure reliable operation and accept one step load per NFPA 110.

TPS offers rental units ready to go and will also service any make or model of generator.

To find out more visit us at: [www.taylorpowergenerators.com](http://www.taylorpowergenerators.com)

- INDUSTRIAL
- COMMERCIAL
- OIL FIELD
- TELECOM
- AGRICULTURAL
- INTERMODAL
- RENTAL
- SERVICE
- CUSTOM PACKAGING



**TAYLOR POWER SYSTEMS HEADQUARTERS**  
947 Industrial Park Drive Clinton, Mississippi

## STATIONARY GENERATORS

MODEL	kW	ENGINE
TD8	8	Perkins 403F-11
TD12	12	Perkins 403F-15
TD20	20	Perkins 404D-22G
TD28	28	Perkins 404D-22TG
TD30	30	Perkins 404D-22TAG
TD55	55	Perkins 1104D-44TG1
TD60	60	Perkins 1104D-E44TAG1
TD80	80	Perkins 1104D-E44TAG1
TD100	100	Perkins 1104D-E44TAG2
TD125	125	Perkins 1106D-E70TAG2
TD140	140	Perkins 1106D-E70TAG2
TD150	150	Perkins 1106D-E70TAG3
TD175	175	Perkins 1106D-E70TAG4
TD200	200	Perkins 1106D-E70TAG5
TD250	250	Perkins 1506D-E88TAG3
TD300	300	Perkins 1506D-E88TAG5
TD350	350	Perkins 2206D-E13TAG2
TD400	400	Perkins 2206D-E13TAG3
TD450	450	Perkins 2506D-E15TAG1
TD500	500	Perkins 2506C-E15TAG3
TD550	550	Perkins 2506C-E15TAG4
TD600	600	Perkins 2806C-E18TAG3
TD750	750	Perkins 2806C-E18TTAG7
TD800	800	Mitsubishi S12A2-Y2PTAW-2
TD1000	1000	Mitsubishi S12H-Y2PTAW-1
TD1250	1250	Mitsubishi S12R-Y2PTAW-1
TD1600	1600	Mitsubishi S16R-Y2PTAW-1
TD2000	2000	Mitsubishi S16R-Y2PTAW2-1
TG25	25	Mitsubishi 2.4L
TG30	30	GM 3.0L
TG40	40	GM 4.3L
TG60	60	GM 5.7L
TG80	80	GM 5.7L
TG100	100	GM 5.7L
TG125	125	PSI 8.8L
TG150	150	PSI 8.8L
TG200	200	NG Industrial 11.1L
TG250	250	NG Industrial 14.6L
TG300	300	NG Industrial 14.6L H.O.
TG350	350	NG Industrial 18.3L
TG400	400	NG Industrial 21.9L
TG450	450	NG Industrial 21.9L H.O.
TG650	650	PSI 31.8L
TG800	800	PSI 39.2L



CONFORMS TO  
UL STANDARD  
2200 CERT. TO CSA STD.  
C22.2 NO. 100



# DIESEL STATIONARY GENERATORS



## TD8 - TD30

Prime: 8kW/10kVA - 30kW/38kVA  
Dimensions: 78"L x 46"W x 46"H



## TD55 - TD100

Prime: 55kW/69kVA - 100kW/155kVA  
Dimensions: 102"L x 46"W x 64"H



## TD125 - TD200

Prime: 125kW/156kVA - 200kW/250kVA  
Dimensions: 136"L x 60"W x 68"H



## TD250 - TD300

Prime: 250kW/313kVA - 300kW/375kVA  
Dimensions: 162"L x 66"W x 94"H



## TD350 - TD400

Prime: 350kW/438kVA - 400kW/500kVA  
Dimensions: 176"L x 66"W x 94"H



## TD450 - TD550

Prime: 450kW/563kVA - 550kW/688kVA  
Dimensions: 192"L x 66"W x 94"H



## TD600 - TD750

Prime: 600kW/750kVA - 750kW/938kVA  
Dimensions: 235"L x 93"W x 114"H



## TD800

Prime: 800kW/1000kVA  
Dimensions: 210"L x 96"W x 155"H



## DIESEL STATIONARY GENERATORS



### TD1000

Prime: 1000kW/1250kVA  
Dimensions: 210"L x 96"W x 155"H



### TD1250

Prime: 1250kW/1563kVA  
Dimensions: 248"L x 114"W x 175"H



### TD1600

Prime: 1600kW/2000kVA  
Dimensions: 280"L x 116"W x 183"H



### TD2000

Prime: 2000kW/2500kVA  
Dimensions: 280"L x 116"W x 183"H

# NATURAL GAS/LIQUID PROPANE STATIONARY GENERATORS

## TG25 - TG60

Prime: 25kW/31kVA - 60kW/75kVA  
Dimensions: 102"L x 52"W x 64"H



## TG80 - TG100

Prime: 80kW/100kVA - 100kW/125kVA  
Dimensions: 120"L x 46"W x 64"H



## TG125 - TG150

Prime: 125kW/156kVA - 150kW/188kVA  
Dimensions: 128"L x 54"W x 72"H



## TG200 - TG300

Prime: 200kW/250kVA - 300kW/375kVA  
Dimensions: 150"L x 75"W x 94"H



## TG350 - TG800

Prime: 350kW/438kVA - 800kW/1000kVA  
Dimensions: 186"L x 90"W x 106"H



# NATURAL GAS POWERED OIL FIELD GENERATORS



## **TGR30 - TGR400**

Prime: 20kW/**25kVA** - 365kW/**465kVA**

## **Standard Features:**

- Heavy-duty Industrial Gas Engine
- Brushless rotating field generator with class “H” insulation
- Analog Control Panel displaying AC voltage, AC frequency, Ammeter, Hour Meter and a toggle switch that switches generator from “Off” to “Manual” to “Auto” positions, Fuel Level and Battery Volt Meter
- Oil Pressure and Water Temperature Gauges
- High and Low Gas Pressure Inlets
- Heavy-duty Integral Vibration Isolators
- Exhaust Silencer
- Heavy-duty 12 Ga. Galvanneal Steel Weather-proof Enclosure
- Stainless Steel Hinges and Hardware throughout
- Heavy-duty Steel Skid with 100% containment of all fluids
- Oil and coolant drain extensions piped into skid with ball valves
- Batteries, Rack and Cables
- Main Line Circuit Breaker - Rated 100%
- Over Current Protection
- Winterization Kit

## **Optional Features:**

- Engine RPM Control Module
  - Seamless Dual Fuel Transition
  - Block Heater
  - Cam-Lok Distribution
  - Shore Power Receptacle
  - Battery Chargers
  - HD Trailers - Gooseneck or Bumper
  - 30A & 50A Twist-lock Receptacle
  - 30 Amp RV Receptacle
  - Buss-Bar distribution
  - GFCI Receptacles
- ...and many more available

# INTERMODAL GENERATORS



# CUSTOM INTERMODAL POWER PACK / RAIL PACK

20 & 40 Foot ISO Lengths Available  
500kW to 2000kW

## Standard Options Include:

- LED Interior Lighting
- Oil Replenishment System
- Low Coolant And Low Oil Level Protection
- Double Walled & Baffled Large Capacity Fuel Tanks
- Exterior Fuel Fill Station
- Bypass Key Switch



## CHASSIS MOUNTED GENERATOR: T15U

Perkins 404F-22G 2.2L Engine  
Marathon Lima MAC Alternator

### Standard Features:

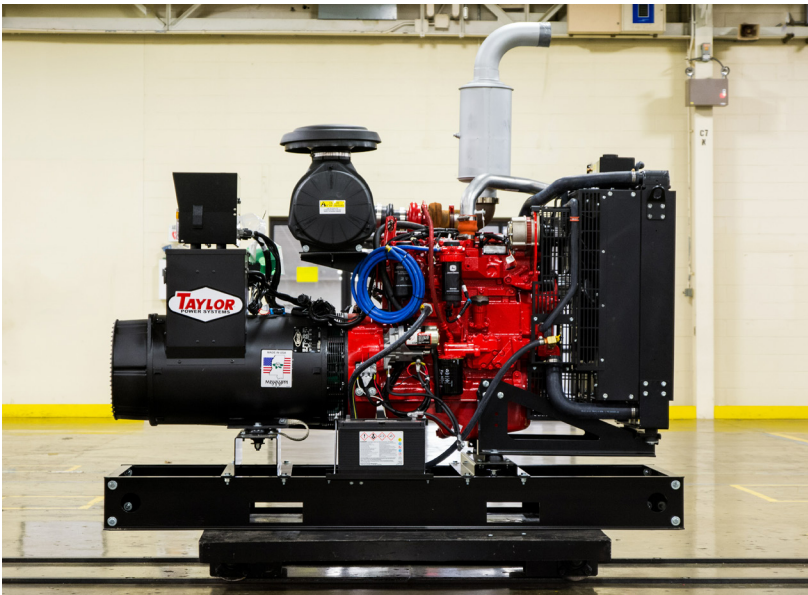
- 50 Gallon Fuel Tank
- Auto-Restart After Non-critical Shutdown
- Load Based Dual Frequency Switching
- Mounting Guards
- 2 Year Warranty

### Optional Features:

- 30 & 80 Gallon Fuel Tank
- Dedicated Shutdown
- Fixed Speed Operation
- 5 Year Warranty

## AGRICULTURAL GENERATORS

MODEL	kW	AMP RATING	ENGINE
TA55	55	229	Perkins 1104D-44TG1
TA60	60	250	Perkins 1104D-E44TG1
TA80	80	333	Perkins 1104D-E44TAG1
TA100	100	417	Perkins 1104D-E44TAG2
TA125	125	520	Perkins 1106D-E70TAG2
TA140	140	583	Perkins 1106D-E70TAG2
TA150	150	625	Perkins 1106D-E70TAG3
TA180	180	750	Perkins 1106D-E70TAG4
TA200	200	833	Perkins 1106D-E70TAG5
TA250	250	1042	Perkins 1506D-E88TAG3
<b>John Deere</b>			
TA45	45	188	John Deere 4045TF290B
TA55	55	229	John Deere 4045TF280D
TA65	65	271	John Deere 4045HF280D
TA80	80	333	John Deere 4045HF285J
TA105	105	438	John Deere 4045HF285I
TA125	125	521	John Deere 4045HF285K
TA155	155	646	John Deere 6068HF285K
TA165	165	688	John Deere 6068HFG82B
TA185	185	771	John Deere 6068HFG85U
TA210	210	875	John Deere 6068HFG85U
TA225	225	938	John Deere 6090HF484C
TA275	275	1146	John Deere 6090HF484B





## TA45 - TA105

Prime: 45kW/45kVA - 105kW/105kVA  
Dimensions: 84"L x 46"W x 57"H



## TA125 - TA185

Prime: 125kW/125kVA - 185kW/185kVA  
Dimensions: 108"L x 46"W x 56"H



## TA200 - TA275

Prime: 200kW/200kVA - 275kW/275kVA  
Dimensions: 132"L x 66"W x 71"H



## FEATURES





Vertical Air Discharge

186 MPH Wind Rated Enclosures Available

Heavy Coat Paint

UL142 Closed Top Dike & Secondary Containment/Double Wall Base Tanks  
UL2085 Tanks Available

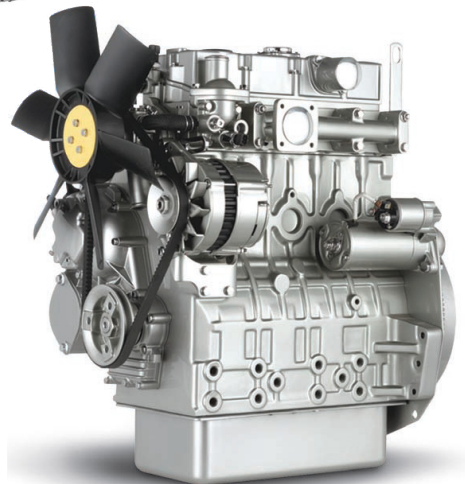
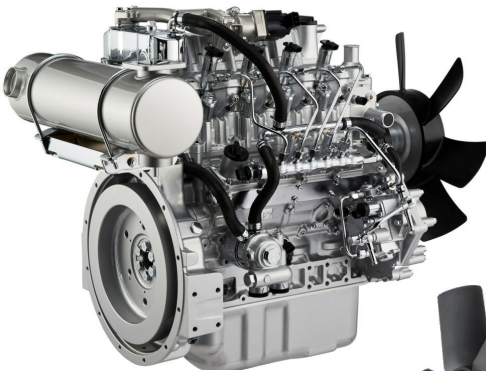
# ENGINES



JOHN DEERE



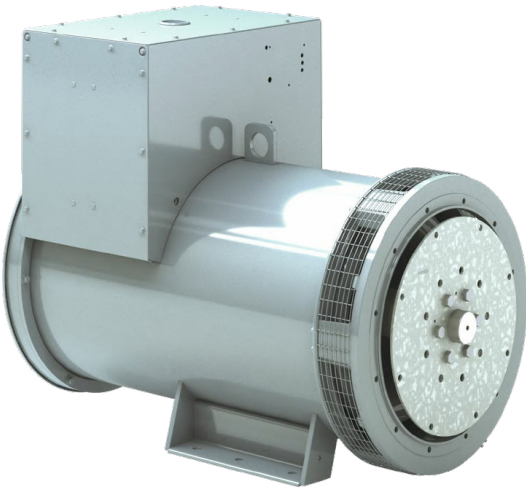
ISUZU



ALTERNATORS

**marathon**™  
Generators

**STAMFORD**®

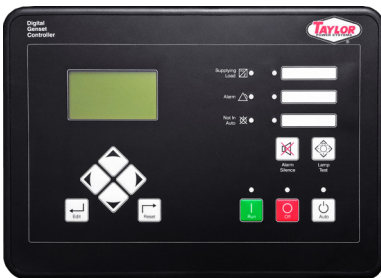


## CONTROLLERS



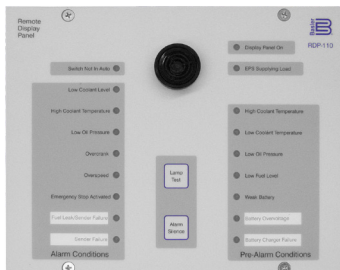
### DGC-2020

- Integrated engine-genset control, protection, and metering
- Microprocessor allows for exact measurement, setpoint adjustment, and timing functions
- Front panel 3 position controls and indicators enable quick and simple operation
- SAE J1939 Engine ECU communications
- Remote RS-485 communications for Optional RDP-110 Remote Annunciator
- Modbus Communications with RS-485, Battery Backup for Real Time Clock, UL recognized



### DGC-2020HD

- Microprocessor-based controller with easy-to-use integrated programmable logic and load sharing capabilities
- Fully programmable I/O including an option for two analog inputs
- Feature-rich design provides exceptional control for advanced paralleling, load sharing and protection.
- Capable of monitoring a generator and up to two busses, with up to seven current transformers



### RDP-110 Remote Annunciator

- Remote Annunciation of the DGC-2020 & DGC-2020HD Controllers
- Annunciation of 17 Alarms & Pre-alarms with 4 Programmable LEDs
- Audible Alarm Horn
- Two Mounting Configurations
- Power Inputs for 12Vdc, 24Vdc and 120Vac

## Taylor Analog

- Automatic CANBUS Engine Control
- Oil Pressure, Water Temperature, Battery Voltage and RPM Gauges
- AC Voltage, Frequency, Percent of Load, and Run-Time Metering
- LED Lights: Low Oil Pressure, High Temperature, Overcrank, Overspeed, & Engine Start
- Impact-Resistant Polycarbonate Bezel and Epoxy Encapsulated
- Manual Key switch to Start the Generator in the Event of a Control Systems Failure



## Deep Sea 7410 MK II

- 4-line backlit LCD display with five key navigation and up to three remote displays
- Power monitoring with reverse power protection and overload protection
- Integral PLC editor and fully configurable via PC using USB, RS232 & RS485 communication
- MODBUS RTU support with configurable MODBUS pages
- Unbalanced load and ground fault protection
- Heated display option available



## Deep Sea 8610 MK II

- Comprehensive kW & kVAR load sharing and synchronizing capabilities
- RS232, RS485 & ethernet remote communications
- Utility decoupling protection
- Remote SCADA monitoring via DSE software applications
- Direct breaker control via fascia buttons
- Built in governor and AVR control



## SERVICE & PARTS



- Factory service & parts support available 24/7
- Major Components (Engines, ATS's, & Alternators) in Stock
- Minor Components (mechanical & electrical components) in Stock
- Dedicated Engine & Generator training facility & staff with training engines, alternators, & ATS's, with a working parallel standby system







## METAL FABRICATION & PAINT FACILITY



Located in Richland, Mississippi, the Metal Fabrication & Paint Facility provides Taylor Power Systems with several essential components in the manufacturing of all generator units. The facility fabricates, welds, and paints numerous parts, including generator enclosures. Additionally, the facility is home to a state of the art laser cutting system. The Metal Fabrication & Paint Facility further illustrates Taylor Power Systems authentic capabilities to create custom products for our customers.







# The Taylor Group

of Companies



The Taylor Groups of Companies consists of Taylor Machine Works, Inc., Sudden Service, Inc. Taylor Leasing & Rental, Taylor Power Systems, Taylor Defense Products, Taylor Logistics, Taylor International, and Taylor Tool & Supply.

The mission of the Taylor Group of Companies is to provide our customers with the highest quality products in the world and to back them up with the most responsive after market service organization available while maintaining a sound financial structure for our shareholders, vendors, community, and customers. We will provide for our employees a challenging and rewarding environment in which to grow and prosper. We will continue to maintain the three watchwords upon which our company was built: **FAITH, VISION & WORK.**

To find out more visit us at: [www.ttgcompanies.com](http://www.ttgcompanies.com)



## **Industrial Trucks with the lowest total operating cost in the industry.**

Backed by over 90 years of experience, Taylor Machine Works has become a world-wide operation with sales driven by the professional and aggressive activities of a vast domestic dealer sales, direct sales, and international sales organization. Taylor Machine Works designs, engineers, and manufactures more than 100 models of industrial lift equipment with lift capacities from 16,000-lbs. to 120,000-lbs.. Each machine built must pass stringent guidelines, insuring that our customers receive the best possible product.

At the very center of this success has been an unwavering commitment to the key concepts of **FAITH, VISION & WORK** by the members of the Taylor family and employees who collectively form **THE BIG RED TEAM!**

To find out more visit us at: [www.taylorbigred.com](http://www.taylorbigred.com)



**“We engineer and build what you need.”**

Founder of Taylor Machine Works, Inc.: W. A. Taylor, Sr.



## **Your #1 Source for Genuine Taylor Parts & Forklift Service**

Sudden Service, Inc. provides exclusive worldwide distribution of Genuine Taylor OEM parts and forklift service for equipment designed, manufactured, and marketed by Taylor Machine Works, Inc. Backed by a network of parts and service centers, nationwide dealer support organizations, and factory trained service technicians, SSI is committed to providing the best aftermarket support in the industry.

Sudden Service also offers training seminars for its service technicians on a regular basis, ensuring the best possible service to Taylor Machine Works' customers.

With major component parts from Cummins®, AxleTech™, International®, Kessler®, and Dana®, to name a few, Sudden Service will help you keep your Taylor equipment up and running. Expect courteous, efficient assistance and expedient replacement parts shipments from our staff of trained sales representatives.

For more information or to find your nearest service center visit:

**[www.taylorsuddenservice.com](http://www.taylorsuddenservice.com)**

**Sudden Service, Inc.**  
Corporate Office  
3637 North Church Avenue  
Louisville, MS 39339

Main Phone: (662) 773-8056  
Parts Fax: (662) 773-9160  
Service Fax: (662) 773-9157



**Taylor Power Systems**

947 Industrial Park Drive  
Clinton, MS 39056

Phone (601) 932-5674

Fax (601) 922-0800

[www.taylorpowergenerators.com](http://www.taylorpowergenerators.com)