

When the power goes out where you are...

...put your trust in the most dependable generator on the market
Taylor Power Systems
 Standby Generators.



Taylor Power Systems is the one name to rely on for emergency power when you need it. **TAYLOR**, a name synonymous with dependability, brings you a dependable line of American-made mobile generators. And each is Taylor-Made to fit YOUR needs.

MODEL	ENGINE	GENERATOR
TD9	Perkins 403D-11G	Stamford BCI164B
TD13	Perkins 403D-15G	Stamford BCI164C
TD20	Perkins 404D-22G	Stamford BCI184E
TD28	Perkins 404D-22TG	Stamford BCI184G
TD30	Perkins 404D-22TAG	Stamford BCI184H
TD55	Perkins 1104D-44TG1	Stamford UCI224E
TD60	Perkins 1104D-E44TG1	Stamford UCI224F
TD80	Perkins 1104D-E44TAG1	Stamford UCI274C
TD100	Perkins 1104D-E44TAG2	Stamford UCI274D
TD125	Perkins 1106D-E66TAG2	Stamford UCI274E
TD140	Perkins 1106D-E66TAG2	Stamford UCI274F
TD150	Perkins 1106D-E66TAG3	Stamford UCI274G
TD175	Perkins 1106D-E66TAG4	Stamford UCI274H
TD200	Cummins QSB7 G5	Stamford UCI274J
TD250	Iveco CURSOR87 TE1D	Stamford HCI434D
TD300	Perkins 2206D-E13TAG2	Stamford HCI434E
TD350	Perkins 2206D-E13TAG2	Stamford HCI434F
TD400	Perkins 22506D-E13TAG3	Stamford HCI534C
TD450	Perkins 2506D-E15TAG1	Stamford HCI534D
TD500	Perkins 2506C-E15TAG3	Stamford HCI534E
TD550	Perkins 2506C-E15TAG4	Stamford HCI534F
TD600	Perkins 2806C-E18TAG3	Stamford HCI534F
TD800	Mitsubishi S12A2-Y2PTAW-2 or Cummins QSK23-67NR2	Stamford HCI634H
TD1000	Mitsubishi S12H-Y2PTAW-1 or Cummins QST30-G5NR2	Stamford HCI634K
TD1250	Mitsubishi S12R-Y2PTAW-1 or Cummins QSK38-G4NR2	Stamford HCI734B
TD1600	Mitsubishi S16R-Y2PTAW-1 or Cummins QS50-G6NR2	Stamford P1734E
TD2000	Mitsubishi S16R-Y2PTAW2-1 or Cummins QSK60-G6NR2	Stamford P1734G
TG25	GM 3.0L INLINE 4	Stamford BCI184E
TG30	GM 3.0L HO INLINE 4	Stamford BCI184G
TG45	GM 4.3L V6	Stamford UCI224C
TG60	GM 5.7 V8	Stamford UCI224E
TG80	GM 8.1L V8	Stamford UCI274C
TG100	GM 8.1L V8	Stamford UCI274C
TG125	GM 8.1L TURBO V8	Stamford UCI274D
TG150	GM 8.1L TURBO AFTERCOOLED V8	Stamford UCI274F
TG200	NGE D111TIC Inline 6	Stamford UCI274J
TG275	NGE D146TIC V8	Stamford HCI434E
TG300	NGE D183TIC V10	Stamford HCI434F
TG400	NGE D219TIC V12	Stamford HCI534C

WARRANTY– All Taylor Power Systems Generator Sets carry a Two-year Standard Warranty on all components against defects and faulty workmanship. Warranty does not cover abuse or improper maintenance.

TAYLOR
POWER SYSTEMS

Taylor Power Systems, Inc.
 461 Hwy. 49 S.
 Richland, MS. 39218
 Phone: 601-932-5674
 Toll Free: 1-800-367-7639
 Fax: 601-932-4028
taylorpower.com 4/23/09

TAYLOR
POWER SYSTEMS

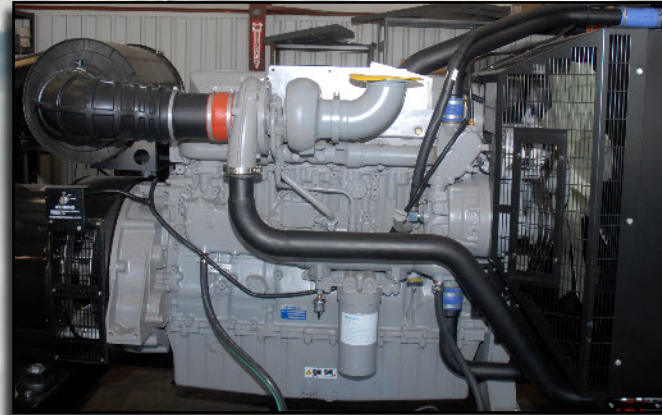
DIESEL & GAS
STANDBY
GENERATORS

Diesel models ranging from TD9 - TD2000
 Gas models ranging from TG25 - TG400



**All the power you need...
 ...when you need it!**

Taylor Power Systems offers a full line of diesel standby generator sets from **9kw to 2000kw** and LP/Natural Gas models from **25kw to 400kw**. Taylor Power Systems offers open units, weather enclosed and sound attenuated models with a wide variety of options available.



Analog Generator Control Panel

Models **TD9** through **TD450** are equipped with EPA TIER 3 certified engines.
Models **TD500** through **TD2000** are equipped with EPA TIER 2 certified engines.



Microprocessor Based Digital Generator Control Panel

STANDARD FEATURES:

- Heavy-duty steel base
- Vibration Isolators
- Oil drain valve with extension
- Battery rack
- Battery cables
- Water jacket heater
- Owners manual
- Control Panel - options available

ACCESSORIES:

- Exhaust silencers
 - Weather enclosures
 - Sound attenuated enclosures
 - Sub-base fuel tanks (for diesel models)
 - Flexible fuel lines
 - Battery
 - Battery chargers
 - Main line circuit breaker
 - DGC2020 control panel
 - Remote annunciator for DGC2020 control panel
 - Analog auto-start control panel
- (refer to specification sheets for a more detailed list of unit accessories)



The models pictured above are the (left) TD100 and the (right) TD250. Both of these units are equipped with the sound attenuating option and the DGC2020 control panel.